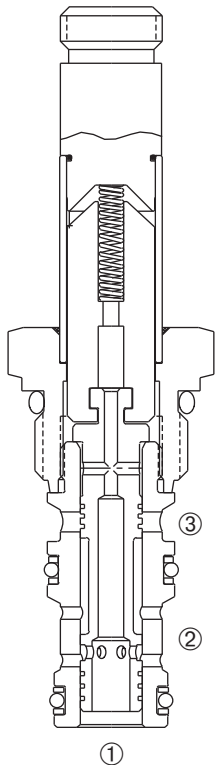
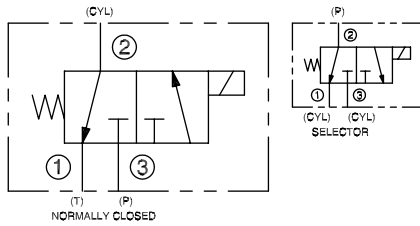


# DSV2-080-3B

Three-Way, Two-Position,  
Spool-Type Solenoid Valve

## SERIES 8



## DESCRIPTION

A cartridge valve designed as a three-way, spool-type, directional control valve.

## OPERATION

When de-energized, the DSV-080-3B allows flow from ② to ①, while blocking flow at ③.

When energized, the cartridge's spool shifts to allow flow between ② and ③ while blocking flow at ①.

**Operation of Manual Override Option:** To override, push button in to activate. To return to normal valve function, release button.

## FEATURES and BENEFITS

- Continuous-duty solenoid.
- Hardened precision spool and sleeve for long life.
- Efficient wet-armature construction.
- Cartridges are voltage interchangeable.
- Optional coil voltages and terminations.
- Manual override option.
- Industry common cavity.
- Compact size.

## SPECIFICATIONS

**Operating Pressure:** 3000 PSI (207 Bar)

**Flow:** See PERFORMANCE CHARACTERISTIC graph.

**Internal Leakage:** (Per land) 5 in.<sup>3</sup>/min. (82 cc/min.) max. at 3000 PSI (207 Bar)

**Temperature:** -30°F to +250°F (-35°C to +120°C)

**Coil Rating:** Continuous from 85% to 110% of rated voltage.

**Current Draw:** 12 VDC is 1.3 amps.

**Minimum Pull-In Voltage:** 85% of rated voltage at 3000 PSI (207 Bar)

**Response Time:** 80% of final change of state with 100% voltage supplied at 100% of nominal flow rating.

**Pull-In:** 12 VDC 45 m. sec. **Drop-Out:** 12 VDC 57 m. sec.

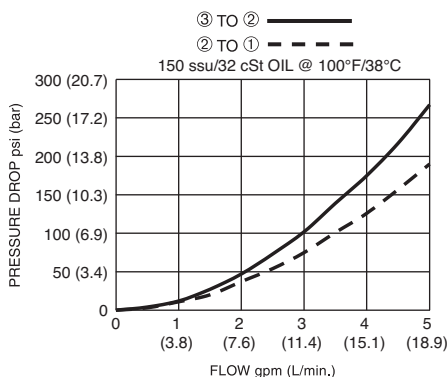
**Recommended Filtration:** ISO 17/15/13

**Fluids:** Mineral-based fluids. For other fluid compatibility, consult factory.

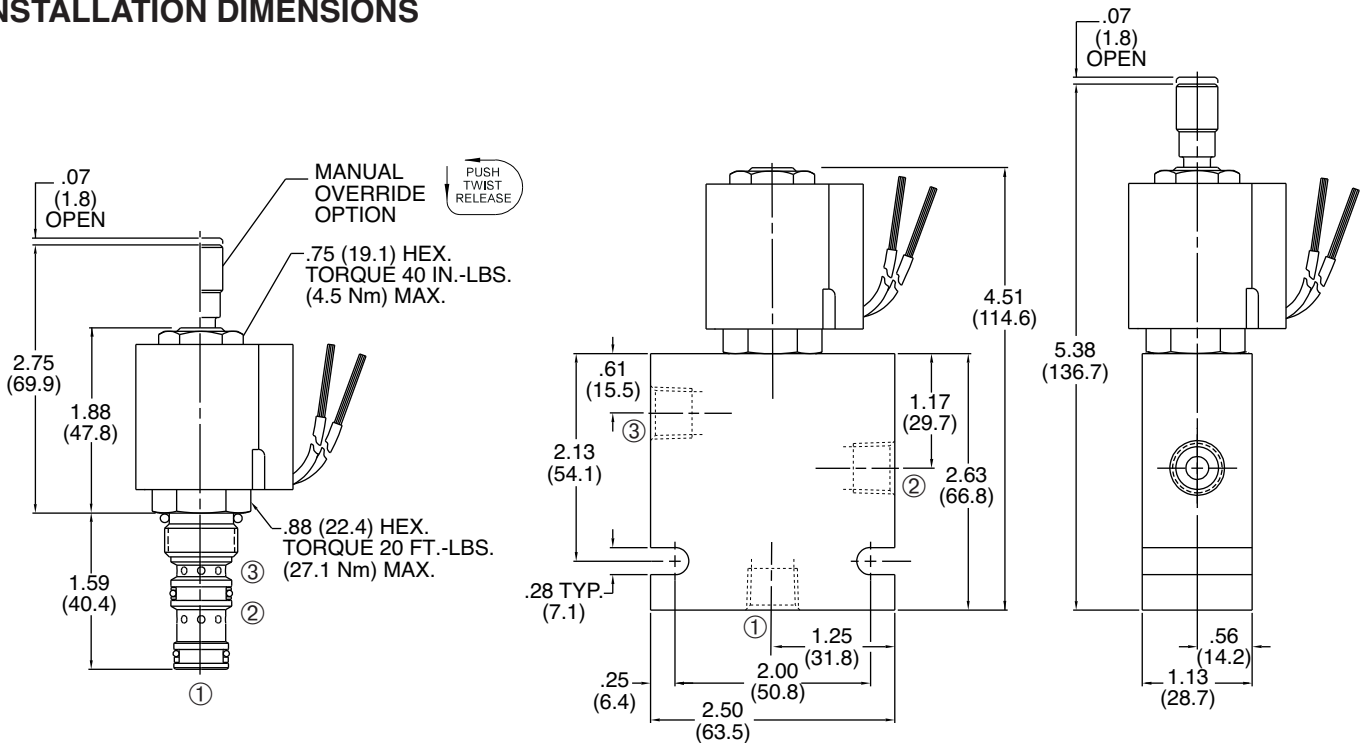
**Cavity/Cavity Tool:** 080-3, see page 11.08.3

**In-Line Body Material:** Anodized 6061T6 aluminum alloy rated at 3000 PSI (207 Bar).

## PRESSURE DROP VS. FLOW

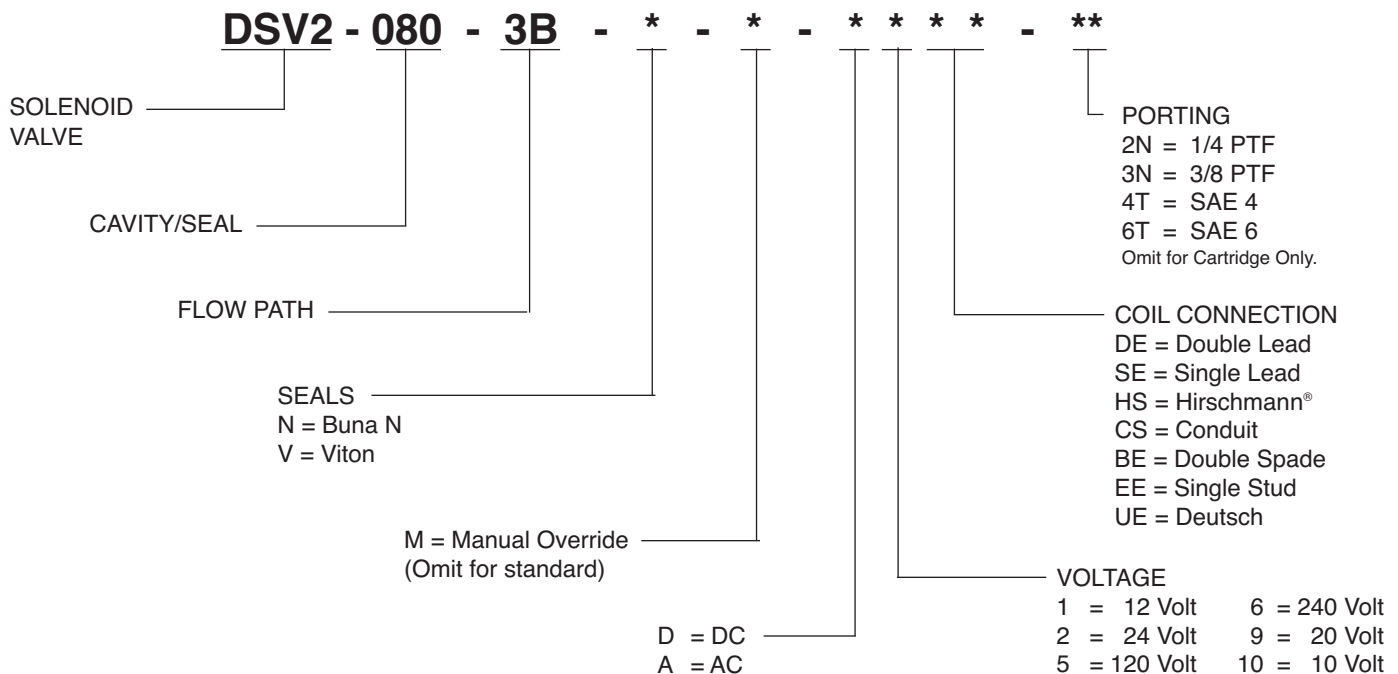


## INSTALLATION DIMENSIONS



( ) Parentheses = Millimeters

## HOW TO ORDER



Omit coil for cartridge only with nut.  
Other porting and coil options available – consult factory.

SOLENOID  
CHECK  
MOTION CONTROL  
FLOW CONTROL  
RELIEF  
PRESSURE CONTROL  
SEQUENCE  
SHUTTLE  
DIRECTIONAL VALVES  
ACCESSORIES  
TECHNICAL DATA