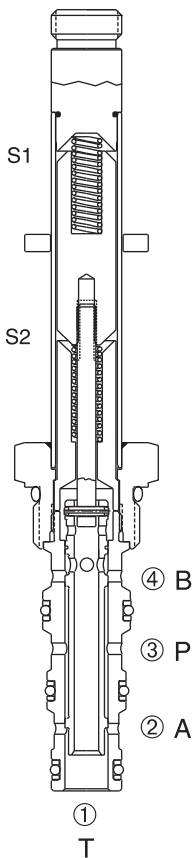
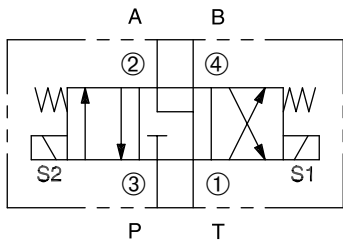


# DSV-080-34M

Four-Way, Three-Position, Motor Center  
Spool-Type Solenoid Valve

## SERIES 8



## DESCRIPTION

A cartridge valve designed as a three position, four-way solenoid valve.

## OPERATION

When de-energized, the valve allows flow between the ①, ②, and ④ ports with the ③ port blocked. When the upper solenoid (S1) is energized, the valve allows flow between ② and ① ports and the ③ and ④ ports. When the lower solenoid (S2) is energized, the valve allows flow between the ④ and ① ports and the ③ and ② ports.

**Operation of Manual Override Option:** To override, pull the knurled knob to activate the coil “S1” function, or push the knurled knob to activate the coil “S2” function. Release the knurled knob to return the center position.

## FEATURES and BENEFITS

- Continuous-duty solenoid.
- Hardened precision spool and sleeve for long life.
- Efficient wet-armature construction.
- Cartridges are voltage interchangeable.
- Optional coil voltages and terminations.
- Industry common cavity.
- Compact size.

## SPECIFICATIONS

**Operating Pressure:** 3000 PSI (207 Bar)

**Flow:** See PRESSURE DROP VS. FLOW CURVE.

Nominal flow 3 gpm (11.4 L/min.)

**Internal Leakage:** (Per land) 10 cu. in./min. max. (164 cc/min.)  
at 3000 PSI (207 Bar)

**Temperature:** -30°F to +250°F (-35°C to +120°C)

**Coil Rating:** [Continuous from 85% to 110% of rated voltage.](#)

**Current Draw:** 12 VDC is 1.3 amps.

**Minimum Pull-In Voltage:** 85% of rated voltage at 3000 PSI (207 Bar)

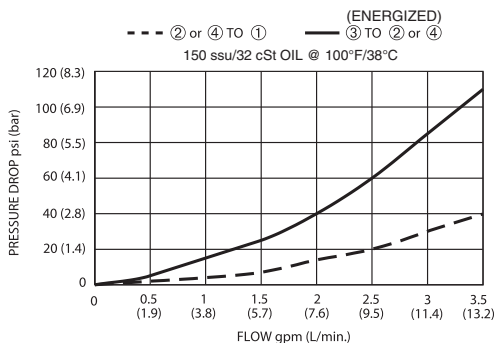
**Recommended Filtration:** ISO 17/15/13

**Fluids:** Mineral-based fluids. For other fluid compatibility, consult factory.

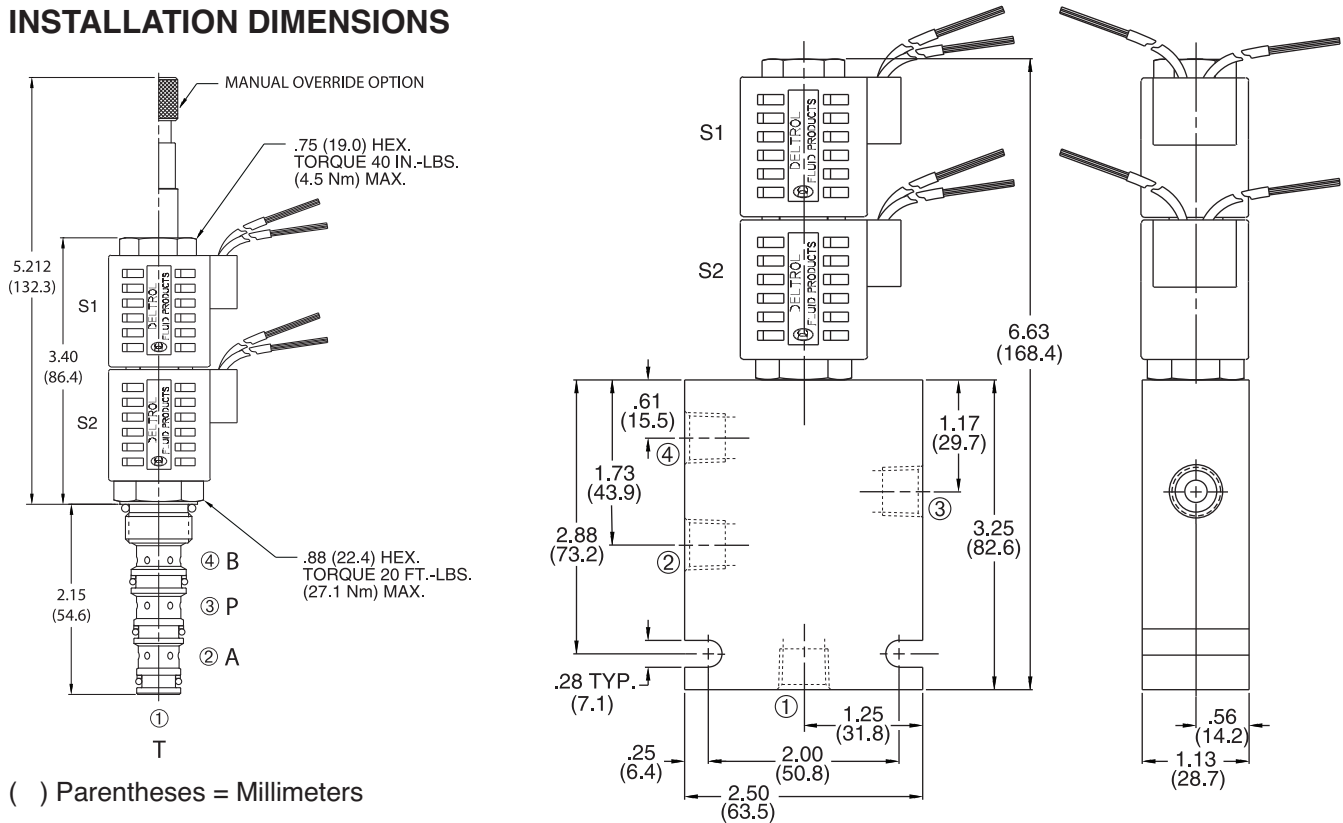
**Cavity/Cavity Tool:** [080-4, see page 11.08.4](#)

**In-Line Body Material:** Anodized 6061T6 aluminum  
alloy rated at 3000 PSI (207 Bar)

## PRESSURE DROP VS. FLOW



## INSTALLATION DIMENSIONS



## HOW TO ORDER

