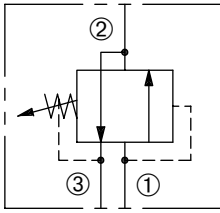


# DPS2-080

Adjustable, Internally-Piloted,  
Internally-Drained Sequence Valve

## SERIES 8

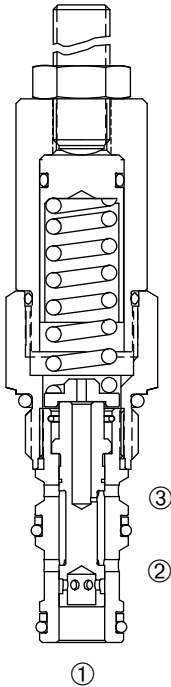


### DESCRIPTION

An adjustable, internally-piloted spool cartridge valve designed to direct oil to a circuit when a predetermined pressure has been reached.

### OPERATION

The DPS2-080 in steady state allows flow from ② to ③ with ① blocked. When the preset pressure at ① is achieved, the spool shifts to allow flow ① to ②.



### FEATURES and BENEFITS

- Hardened spool and sleeve for long life.
- Industry common cavity.
- Compact size

### SPECIFICATIONS

**Operating Pressure:** 3000 PSI (207 Bar)

**Max. Flow:** 6 GPM (22.7 l/min)

**Internal Leakage:** 82 cc/min at 3000 PSI (207 Bar)

**Temperature:** -30°F to +250°F (-35°C to +120°C).

**Spring Range:** 100 to 400 PSI (6.9 to 28 Bar)  
300 to 2000 PSI (21 to 138 Bar)  
1500 to 3000 PSI (103 to 207 Bar)

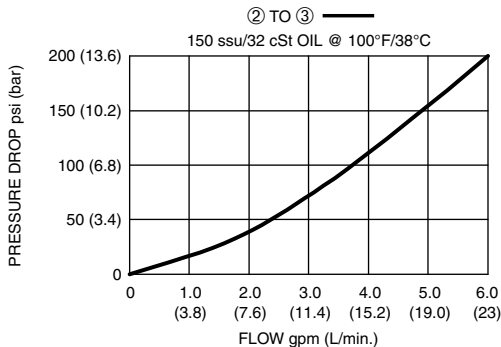
**Recommended Filtration:** ISO 17/15/13

**Fluids:** Mineral-based fluids.

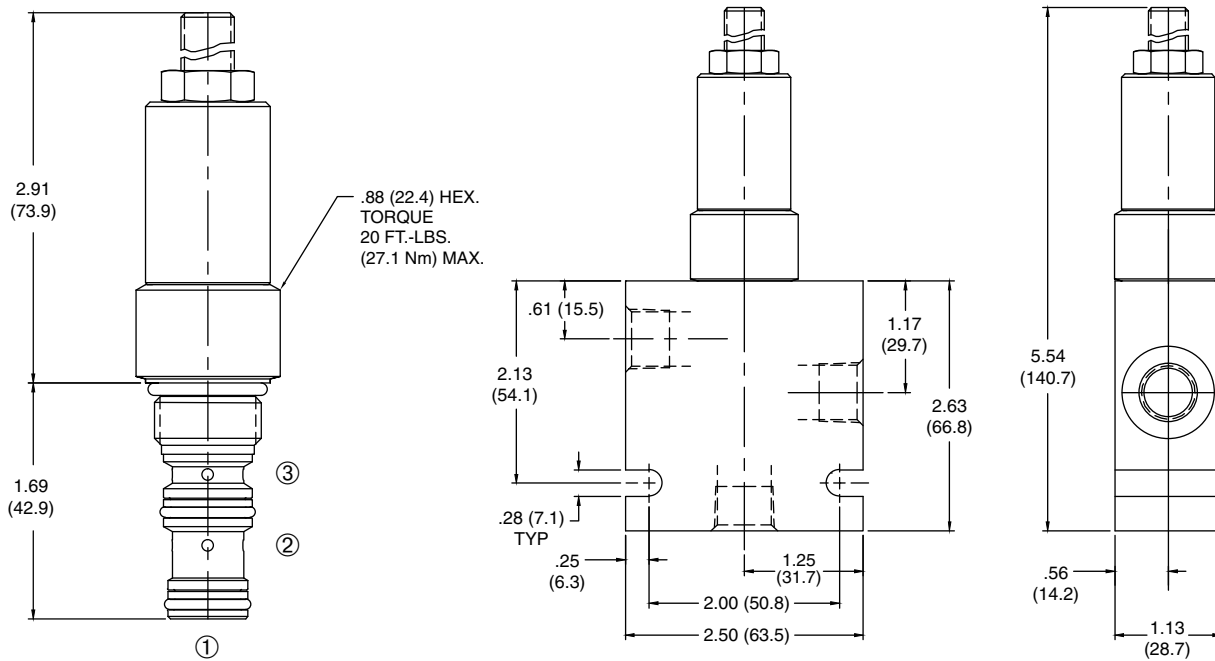
**Cavity/Cavity Tool:** 080-3, see page 11.08.3

**In-Line Body Material:** Anodized 6061T6 aluminum alloy rated at 3000 psi (207 Bar).

### PRESSURE DROP VS. FLOW



## INSTALLATION DIMENSIONS



( ) Parentheses = Millimeters

## HOW TO ORDER

**DPS2 - 080 - \* - \* - \*\* / \*\*\*\* - \*\***

PRESSURE SEQUENCE VALVE

CAVITY/SEAL

SEALS  
N = Buna N  
V = Viton

SCREW ADJUSTMENT  
H = Hidden  
K = Knob  
S = Screw

PORTING

2N = 1/4 PTF  
3N = 3/8 PTF  
4T = SAE 4  
6T = SAE 6

Omit for Cartridge Only.  
(Other porting options available – consult factory.)

FACTORY PRESET PSI  
(Omit for standard)

SPRING RANGE

4 = 100 to 400 PSI (6.9 to 28 Bar)  
20 = 300 to 2000 PSI (21 to 138 Bar)  
30 = 1500 to 3000 PSI (103 to 207 Bar)