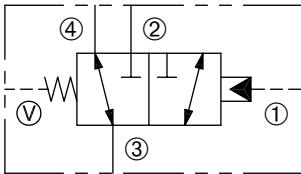


DPOD2-100-3

Pilot-Operated, Externally Vented,
Three-Way, Two-Position, Directional Control Valve



SERIES 10



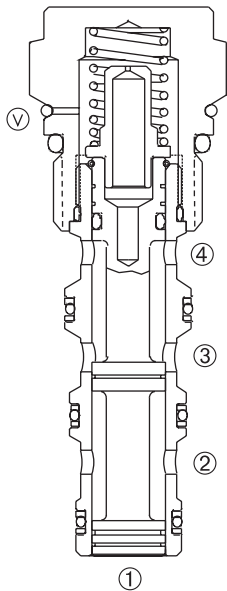
DESCRIPTION

A cartridge valve designed as a pilot-operated, three-way, two-position, spool-type, directional control valve.

OPERATION

With no pilot signal at port ①, port ② is blocked and flow is allowed between port ③ and ④. With the required pilot signal applied at port ①, the valve shifts to allow flow between ports ③ and ② while blocking flow at port ④.

The bias spring returns the spool to its original position when the pilot signal is removed.



FEATURES and BENEFITS

- Hardened spool and sleeve for long life.
- Industry common cavity.
- Compact size.

SPECIFICATIONS

Operating Pressure: 3000 PSI (207 Bar)

Flow: See PRESSURE DROP VS. FLOW graph.
Nominal Flow 10 GPM (37.9 L/min).

Internal Leakage: 5 in³/min. (82cc/min.) max. at 3000 PSI (207 Bar)

Pilot Pressure: 125 PSI (8.6 Bar)

Temperature: -30°F to +250°F (-35°C to +120°C)

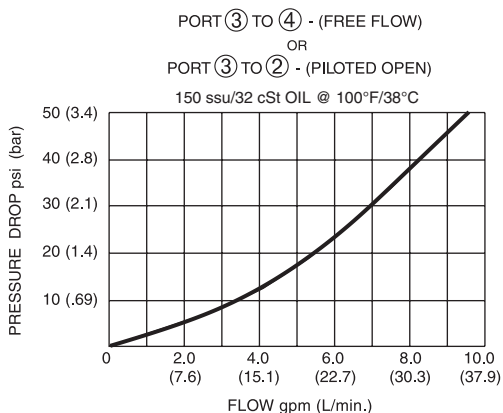
Recommended Filtration: ISO 17/15/13

Fluids: Mineral-based fluids. For other fluid compatibility, consult factory.

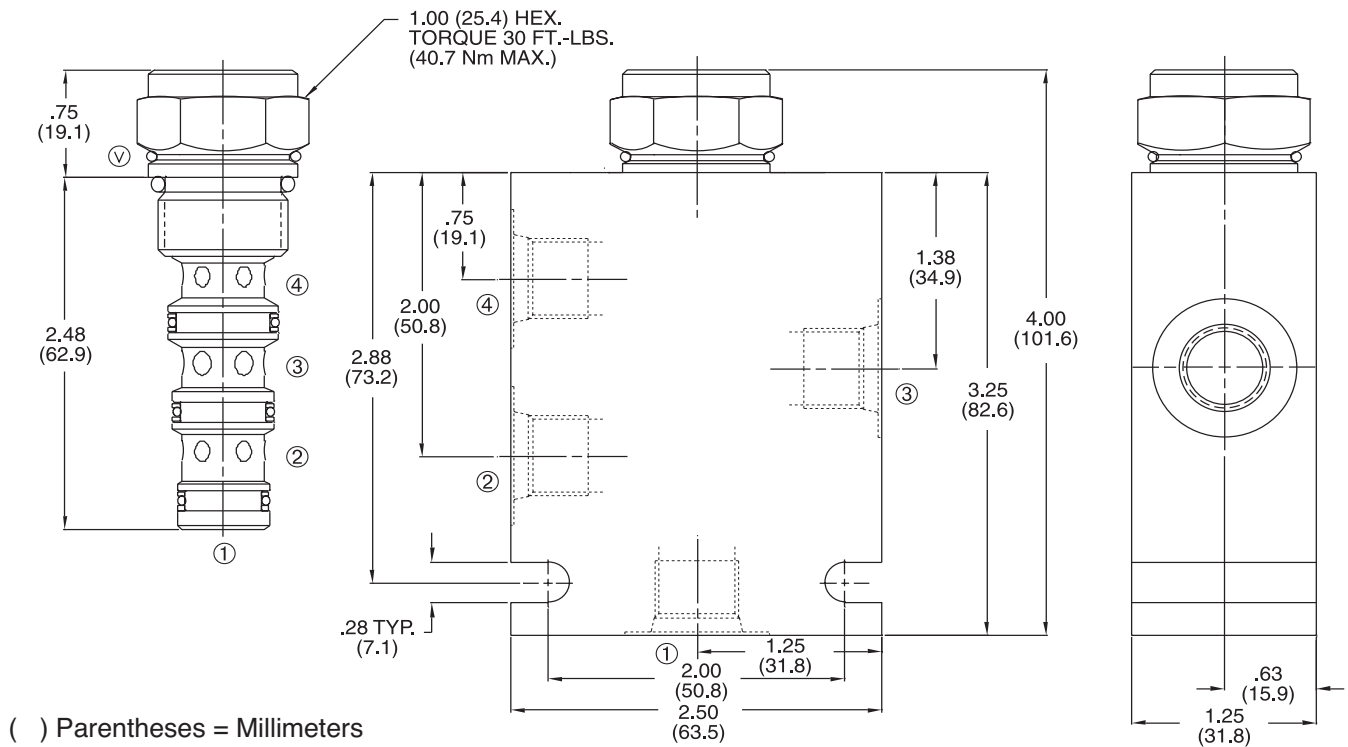
Cavity/Cavity Tool: 100-4, see page 11.10.4

In-Line Body Material: Anodized 6061T6 aluminum alloy rated at 3000 PSI (207 Bar).

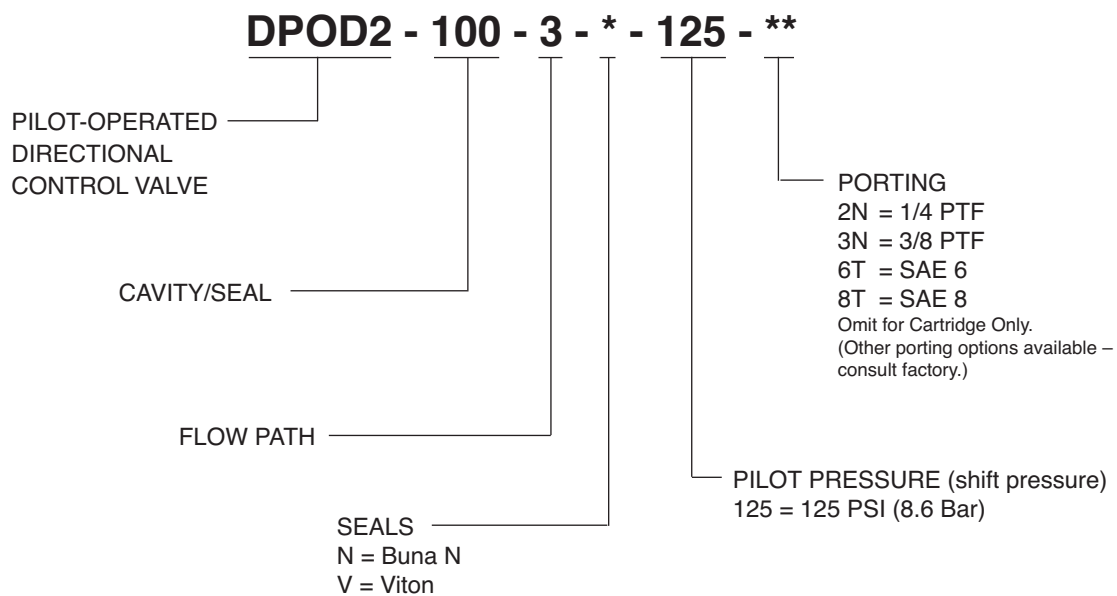
PRESSURE DROP VS. FLOW



INSTALLATION DIMENSIONS



HOW TO ORDER



SOLENOID
CHECK
MOTION CONTROL
FLOW CONTROL
RELIEF
PRESSURE CONTROL
SEQUENCE
SHUTTLE
DIRECTIONAL VALVES
ACCESSORIES
TECHNICAL DATA