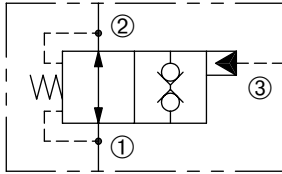


DPOD-100-2NOP

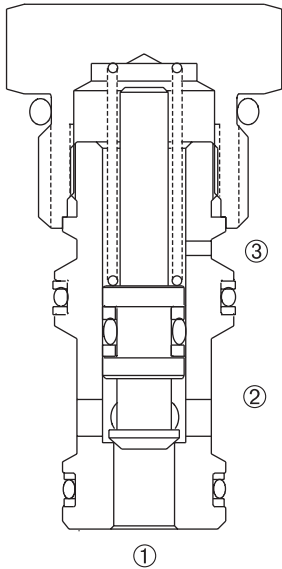
Pilot To Close, Poppet-Type,
Directional Control Valve

SERIES 10



DESCRIPTION

A cartridge valve designed to allow free flow in both directions. The valve can be piloted to block flow in both directions. This valve can be used as a load holding or blocking valve.



OPERATION

Pressure at ① or ② overcomes the spring-bias poppet and allows free flow between ② and ① or ① to ②. When required the pilot pressure is achieved at ③, the poppet is held closed to block flow between ② and ① and ① and ②. The pilot area ratio port ③ to ① is 2.0 to 1 and the area ratio port ③ to ② is 2.8 to 1.

FEATURES and BENEFITS

- Hardened poppet and sleeve for long life and low leakage.
- Industry common cavity.
- Compact size.

SPECIFICATIONS

Operating Pressure: 3000 PSI (207 Bar)

Flow: See PRESSURE DROP VS. FLOW graph.

Internal Leakage: 5 drops/min. max. at 3000 PSI (207 Bar)

Crack Pressure: 65 PSI (45 Bar) at port 1 (biased spring).
85 PSI (58.6 Bar) at port 2 (biased spring).

Pilot Pressure: 125 PSI (8.6 Bar)

Pilot Ratio: ③ to ① is 2.0 to 1 and ③ to ② is 2.8 to 1.

Temperature: -30°F to +250°F (-35°C to +120°C)

Recommended Filtration: ISO 17/15/13

Non-Critical Application – ISO 20/18/14

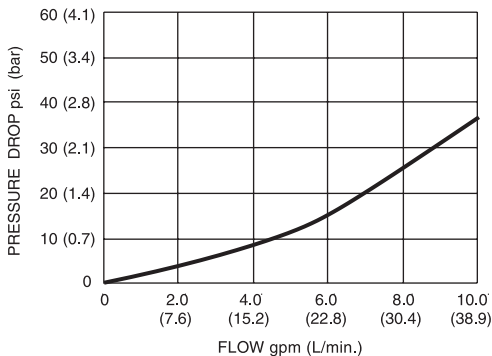
Fluids: Mineral-based fluids. For other fluid compatibility, consult factory.

Cavity/Cavity Tool: 100-3S, see page 11.10.3S

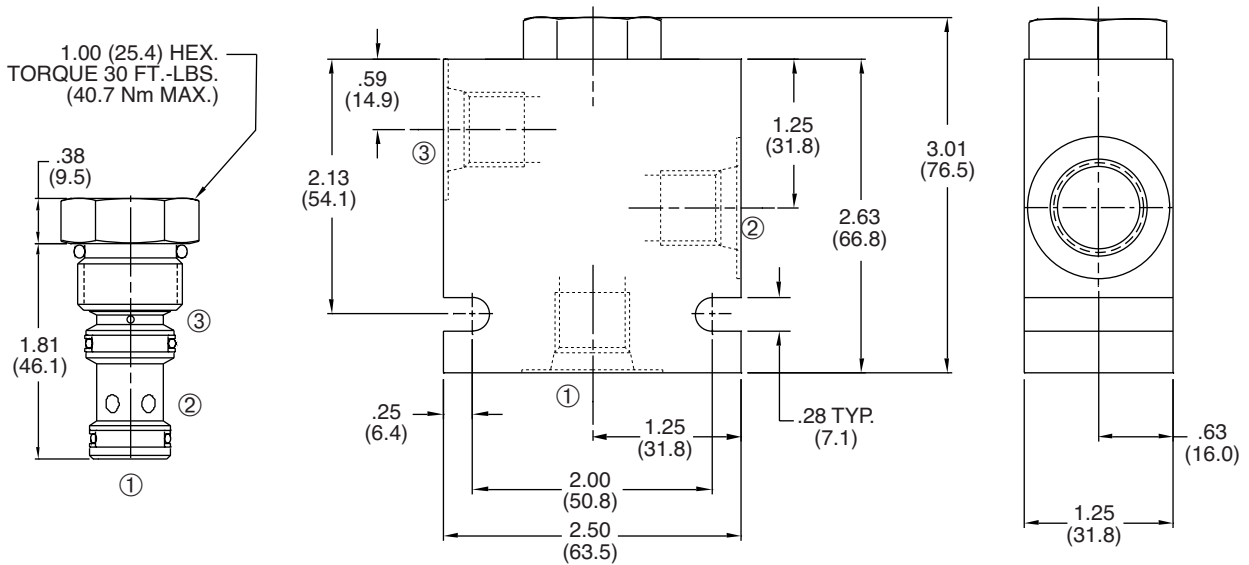
Body Material: Anodized 6061T6 aluminum alloy rated at 3000 PSI (207 Bar).

PRESSURE DROP VS. FLOW

PORT ② TO ① OR ① TO ②
150 ssu/32 cSt OIL @ 100°F/38°C



INSTALLATION DIMENSIONS



() Parentheses = Millimeters

HOW TO ORDER

